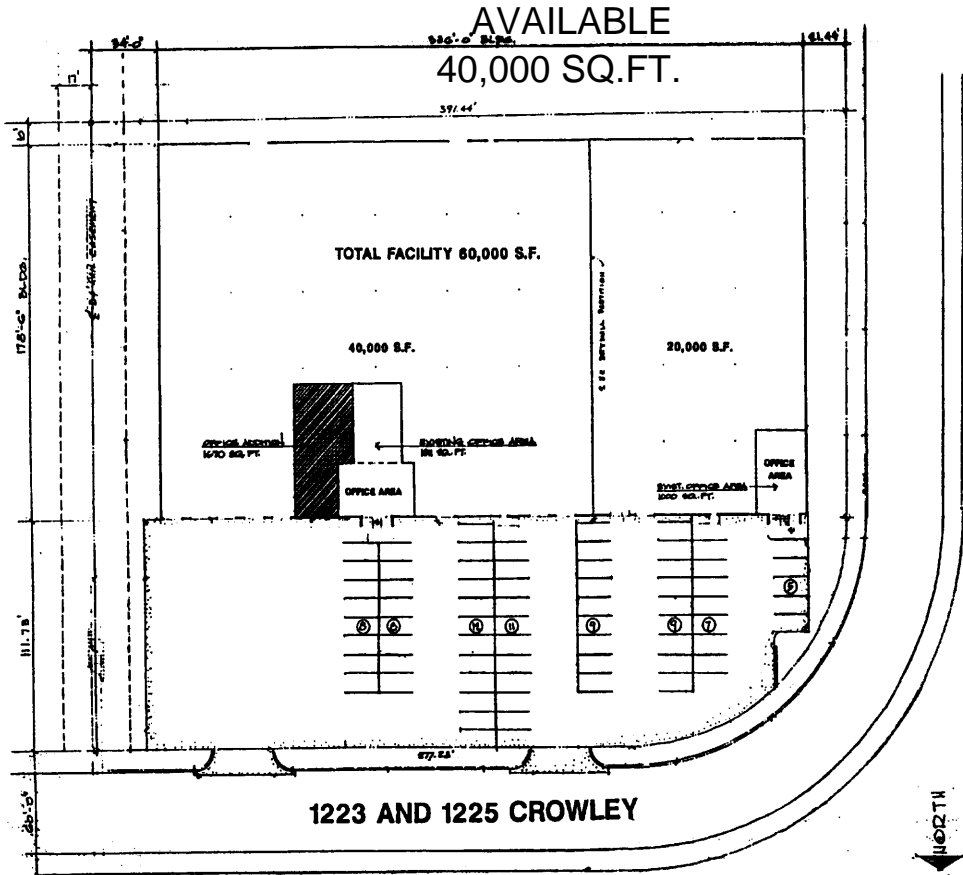


SUBMITTED BY

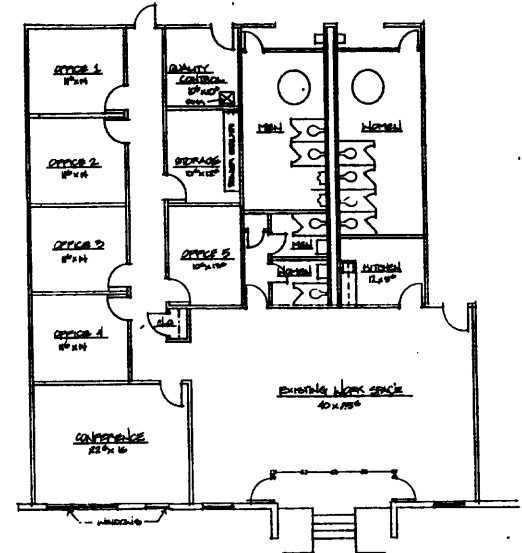
**HARRY B. LUCAS
COMPANIES**

Commercial and Industrial Real Estate

5000 Quorum Drive • Suite 480
Dallas, Texas 75240-7509 • 214/991-4567 • Fax 214/490-4141



1 SITE PLAN
1/8" = 1'-0"



2 PLAN DETAIL
1/8" = 1'-0"

FOR MORE INFORMATION CALL: TOM LUCAS

972-991-4567

Commercial and Industrial Real Estate

Information contained herein has been obtained from the owner of the property & other sources that we deem reliable. We have no reason to doubt its accuracy but we do not guarantee it. This property is subject to prior sale or withdrawal without notice.

REVISIONS	1

Copyright 1999
 All or part of this information may be used in other projects by the architect, engineer, or other professional without the written consent of the architect, engineer, or other professional. Publishing is prohibited.

KAIINA
 COMMERCIAL PLANNING & DESIGN
 KAIINA S. INTERNATIONAL, SUITE 100
 5000 QUORUM DRIVE, DALLAS, TEXAS 75240
 (214) 490-4141

**1223 & 1225 CROWLEY
WAREHOUSE SPACE
CARROLLTON, TEXAS**

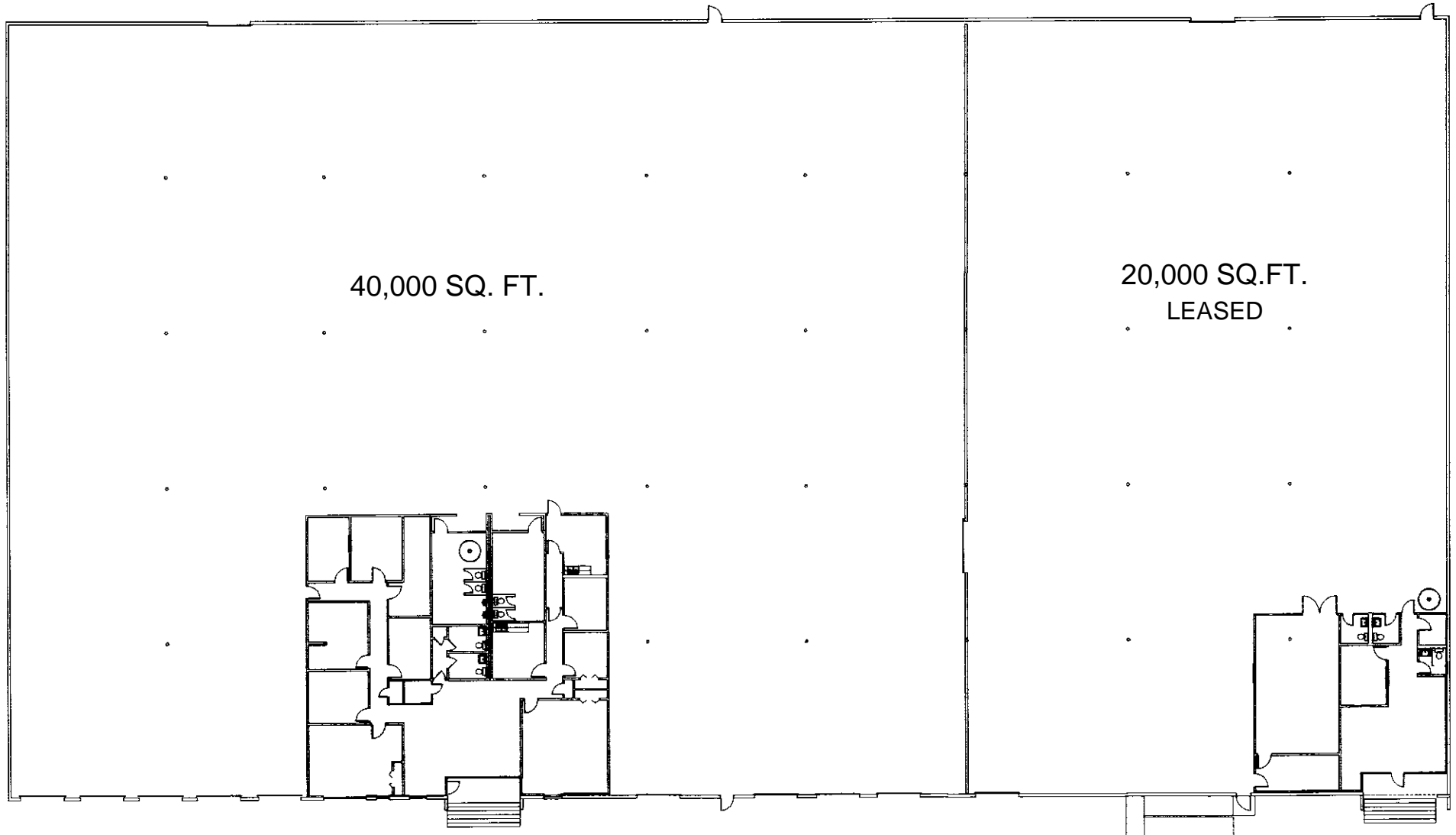
DATE	2-17-99
SCALE	AS SHOWN
BY	JL
CHECKED	PL
DATE	2-24-99
BY	
CHECKED	

FOR ADDITIONAL INFORMATION CALL: TOM LUCAS 972-991-4567



Commercial and Industrial Real Estate
214-991-4567

5000 Quorum Drive • Suite 480 • Dallas, Texas 75240-7509 • Fax 214/490-4141

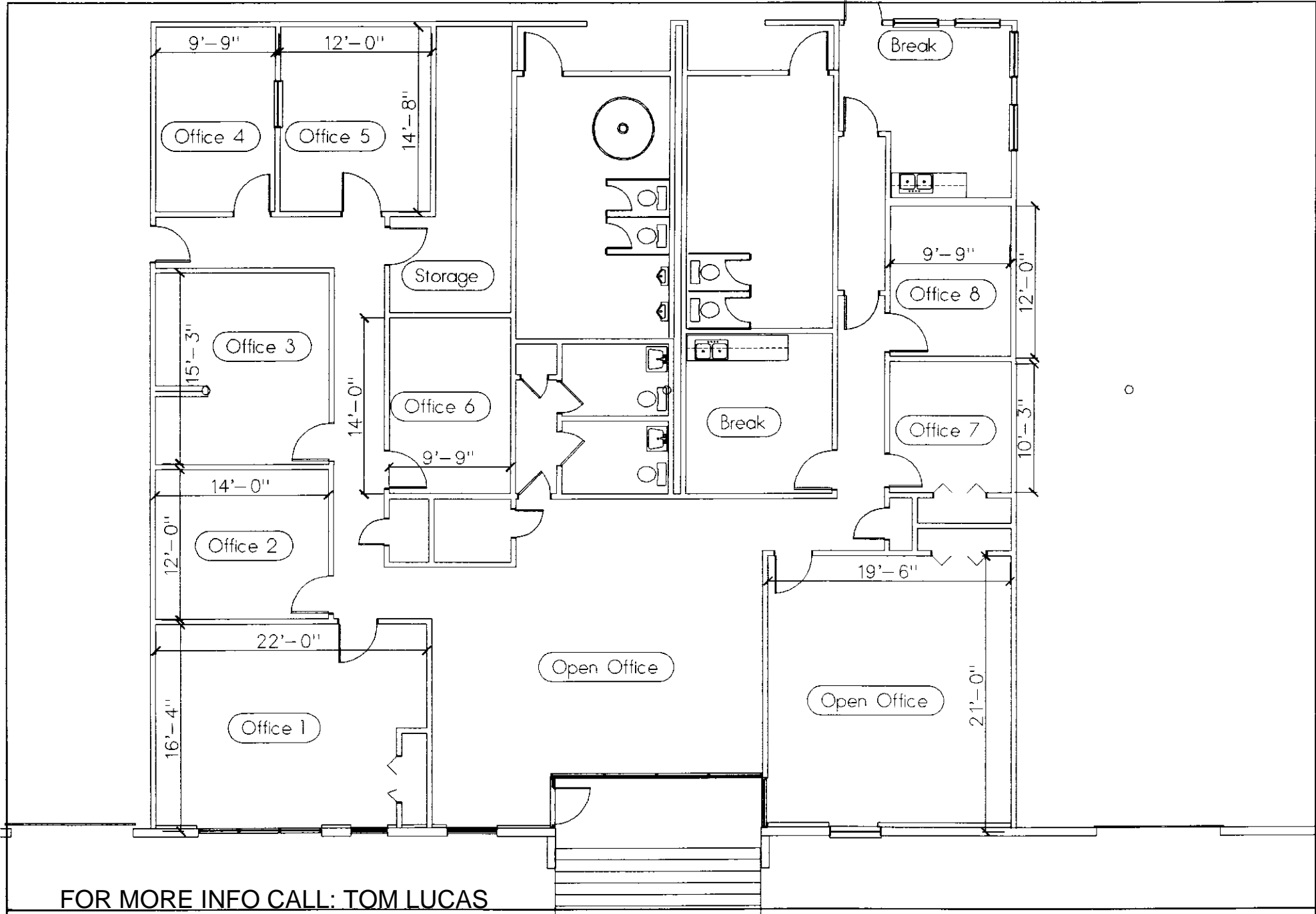


1223 CROWLEY

Commercial and Industrial Real Estate

1225 CROWLEY

Information contained herein has been obtained from the owner of the property & other sources that we deem reliable. We have no reason to doubt its accuracy but we do not guarantee it. This property is subject to prior sale or withdrawal without notice.



FOR MORE INFO CALL: TOM LUCAS

972-991-4567

AS BUILT DRAWING FOR:

SUITE: 1223 CROWLEY

CARROLLTON, TEXAS

SCALE 3/32" = 1'-0"

18 MARCH 1996

