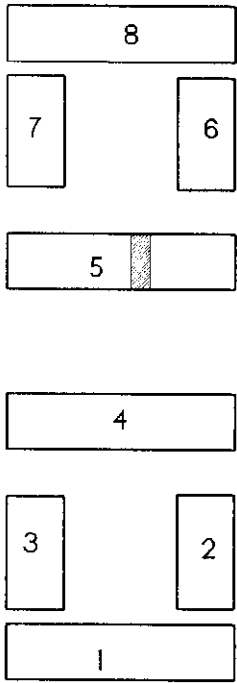
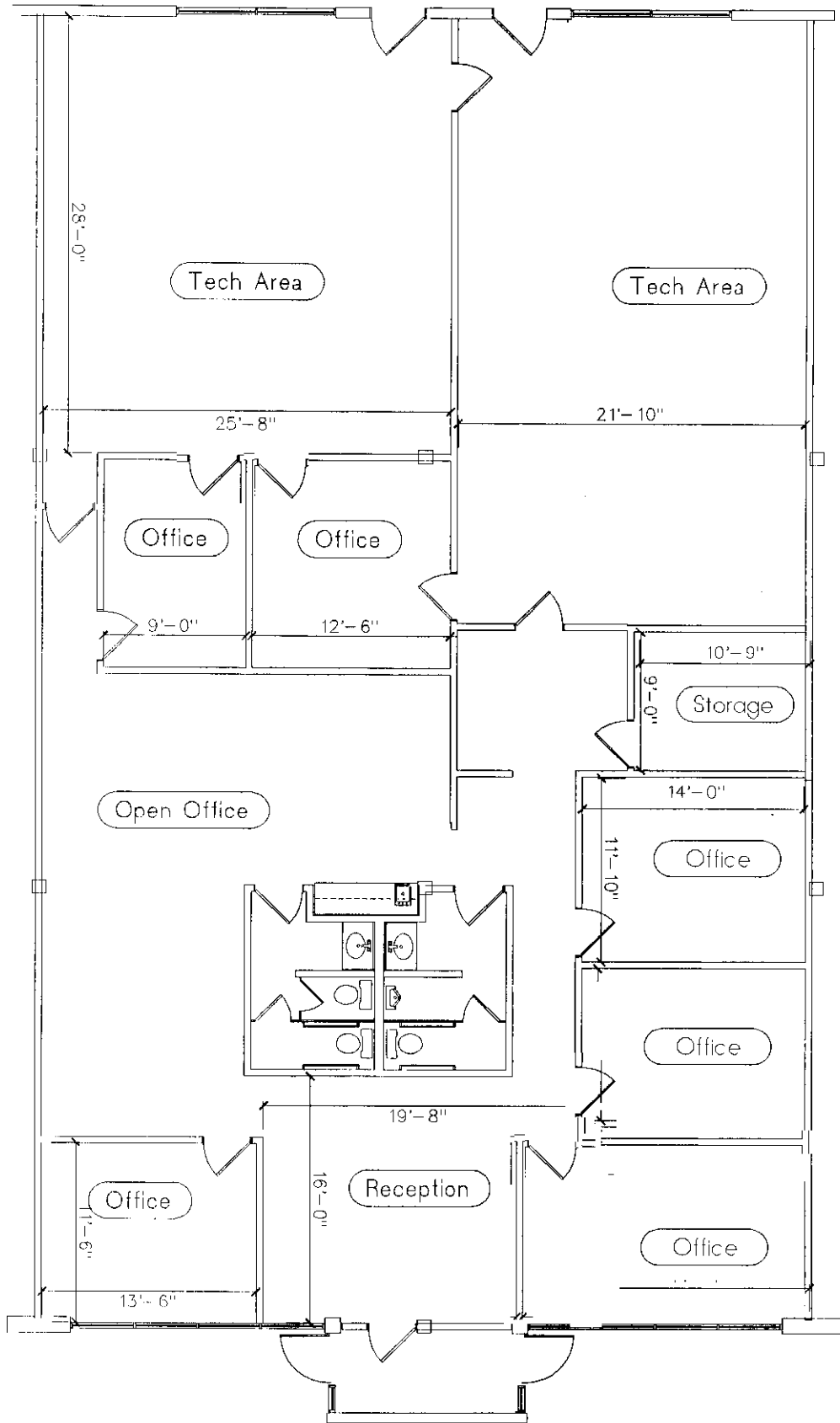


FOR MORE INFO:

TOM LUCAS

972-991-4567



± 4,218 S.F.

SCALE 3/8" = 1'-0"
ALL DIMENSIONS ARE APPROXIMATE



AS BUILT FOR:

SUITE: 535

4951 AIRPORT PARKWAY
ADDISON, TEXAS
KENNIGTON PROPERTIES

9/15/97

DESIGNS
ARCHITECTURAL PLANNING
177 CRESTVIEW
DALLAS, TEXAS
1972) 952-4086
FAX 952-3333

FOR MORE
INFORMATION
CONTACT
Harry Blucas
Company
(972) 991-4567

Commercial and Industrial Real Estate

Information contained herein has been obtained from the owner of the property & other sources that we deem reliable. We have no reason to doubt its accuracy but we do not guarantee it. This property is subject to prior sale or withdrawal without notice.